

Geography Year 4 – Summer 2 What would my ideal settlement look like?

What do I need to know from previous topics?

A map is a specially drawn picture of a place from above.

There are different types of housing in our local area, such as detached, semi-detached, terraced, bungalow and flats.

What will I need to remember for future learning?

Four-figure grid references are used to locate a particular grid square on a map. We use the eastings (horizontal number) first and then the northings.

Maps use symbols to identify places of interest.

Settlements are places that become communities for people to live. People choose to settle in an area if it meets their needs.

Throughout history, Romans, Anglo-Saxons and Vikings all settled in Britain and established some of the towns we live in today.

Maps and aerial photographs can show us how the land is used in an area. In our local area, the land is mostly used for housing.

Key Landmarks
Walkden Town Centre



Key Vocabulary Definition

Land use how the land in a settlement is used by humans

Four-figure grid reference used to locate a particular grid square on a map. We use the eastings (horizontal number) first and then the northings

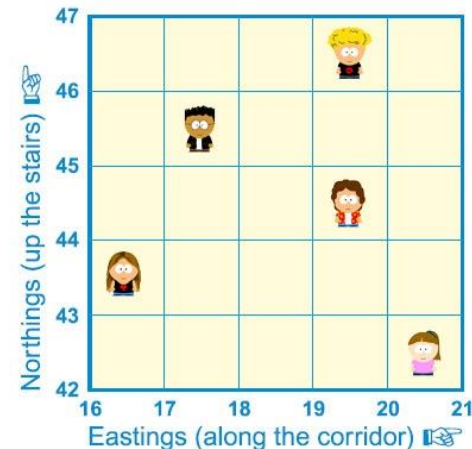
retail selling goods to the public

leisure use of free time for enjoyment

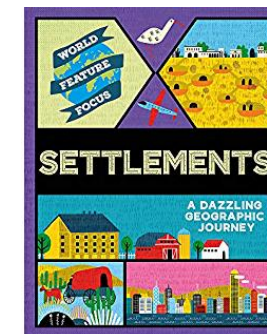
housing houses or flats where people can live

industrial production and manufacturing, for example factories and businesses that make products

agricultural farming, growing soil, crops or rearing animals



Key Text



What do I need to know from previous topics?

Children and adults are baptised in the name of the Father, the Son and the Holy Spirit which is the Trinity.

Dharma is what is expected of a Hindu person. It is the 'right way of living'.



Key Vocabulary Definition

Baptism Water is poured on the head or the person goes under the water to show their belief in Jesus.

Confirmation A sign that a Christian is old enough to take responsibility for their own faith.

Sacred Thread Ceremony A Hindu ceremony to show that they are old enough to take on religious responsibility.

Bar/Bat Mitzvah A ceremony to mark the time when a boy or girl becomes a Jewish adult.

Naming day An opportunity for non-religious people to mark the arrival of a new child.

What will I need to remember for future learning?

Christian ceremonies include **baptism** and **confirmation**.

Hindu ceremonies include the '**Sacred Thread Ceremony**'.

Jewish ceremonies include **Bar/Bat Mitzvah**.

Some people will hold a non-religious '**Naming Day**' for their child.

All religions and many non-religious people will celebrate **marriage** with a wedding ceremony.



Art Year 4 Summer: Andy Goldsworthy- Land Art (Drawing, Collage and Sculpture)

What do I need to know from previous topics?

Many artists are inspired by nature and we can see this influence in their artwork.

When creating a 3D drawing, we need to consider the effect of the light.

Observational drawing can include drawing something directly in front of you, around you or copying from an existing image.

Transient art is a term used for any creative work that does not stay fixed in its position.

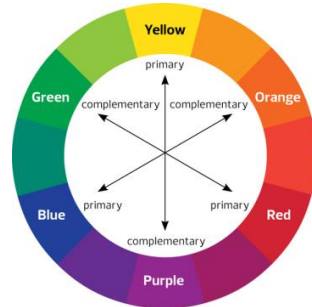
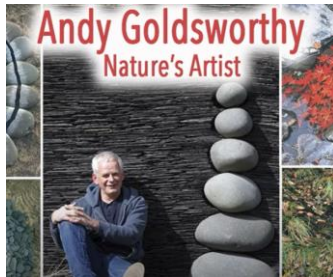
What will I need to remember for future learning?

Land Art has often been made in remote and rural areas far from urban populations, and sometimes from materials that disappear over time.

Artists may choose to photograph their work to see how it changes over time.

Key texts

Andy Goldsworthy-
Nature's Artist



Key artists and artwork

Andy Goldsworthy- Taking a Wall for a Walk



Andy Goldsworthy-
Rowan Leaves and Hole



Key Vocabulary	Definition
Land art	art that is made directly in the landscape, sculpting the land itself or making structures in the landscape using natural materials
natural	existing in nature, not made by humans
rural	a countryside area, outside of towns and cities
decay	the process of rotting or decomposing
acrylic	a fast-drying, strong paint

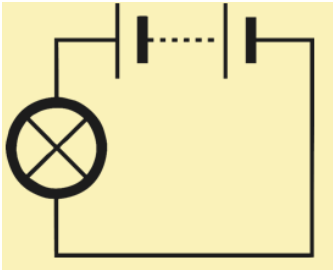
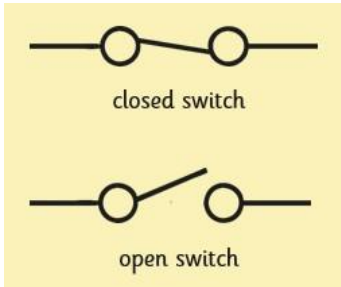
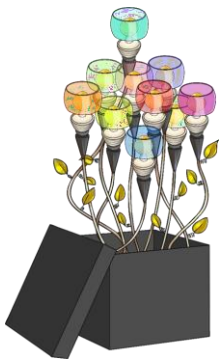


What will I know by the end of the unit?

In the Victorian period, Thomas Edison invented the 'modern light bulb' that worked for a long time. His invention meant that people could use electricity to light their homes.	The Anglepoise lamp is a balanced-arm lamp designed in 1932 by British designer George Carwardine.
Electrical currents need a path on which to travel. Another name for this path is a circuit.	Electricity flows from the power source, in a loop or circuit, back to the power source.
A switch is used to make or break a complete circuit.	If there is a fault in a series circuit, the other components will stop working. With a parallel circuit, if there is a fault in one component, the other continues to function.

Key Vocabulary	Definition
Battery	A device that can make electricity, with the reaction of certain chemicals.
Conductor	Substances that an electrical charge can pass through without difficulty.
Insulator	A material that is a poor conductor of electricity.
Circuit	A complete path around which electricity can flow.
series	A single pathway through which electricity can flow.
parallel	A parallel circuit contains multiple pathways or branches.

Key diagrams





What do I need to know from previous topics ?

Identify common appliances that run on electricity.

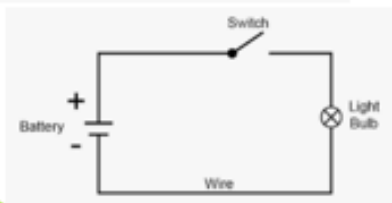
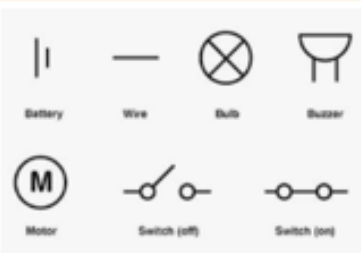
What will I need to know for future learning?

Electricity can only flow around a complete circuit that has no gaps. There must be wires connected to both the positive and negative end of the power supply/battery.

Switches can be used to open or close a circuit. When off, a switch 'breaks' the circuit to stop the flow of electricity. When on, a switch 'completes' the circuit and allows the electricity to flow.

A conductor of electricity is a material that will allow electricity to flow through it. Metals are good conductors.

An insulator does not allow electricity to flow through them. Wood, plastic and glass are good insulators.



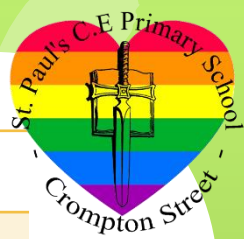
Super Scientist

Maria Telkes
1900 – 1995



Maria is a famous scientist who made lots of discoveries around solar power. She is best known for creating the first house built with a heating system that ran completely on solar energy.

Key Vocabulary	Definition
appliance	A machine in your home that you use to do a job such as cleaning or cooking.
cell	Part of a battery
circuit diagram	Electrical components shown in a picture by using standard symbols.
conductor	Materials which allow electricity to flow through them with ease.
insulator	Materials that do not allow electricity to pass through them with ease.
parallel circuit	A circuit with two or more pathways for the current to flow through.
series circuit	A looped circuit where the electricity flows from the positive to the negative terminal of the battery.
switch	A device for making and breaking the connection in an electrical circuit.



What will I know by the end of the unit?	
There are many changes that will happen all through our lives but we can learn to manage change well.	Puberty is the time when our bodies change from being a child's body to that of an adult.
Feelings can change during puberty. Puberty starts when hormones are triggered by the brain. Hormones can affect our mood and feelings.	When two people love and care for each other and want to spend the rest of their lives together they can choose to get married , live together or have a civil partnership .

Key Vocabulary	Definition
Compromise	An agreement in an argument in which the people involved reduce their demands, or change their opinion in order to agree.
Puberty	The time when our bodies change from being a child's body to that of an adult.
Hormones	Chemicals triggered by the brain.
Civil Partnership	A formal legal relationship between same-sex or opposite sex partners, formed by signing a document.
Marriage	A legal relationship between same-sex or opposite sex partners formed by vows.

Key Dates:

Transition Days at High School

June

12-18-Healthy Eating Week

17-24 drowning prevention week

July

Plastic free July

Mini Minds

June-Calmasaurus



July-Friendlysaurus

